



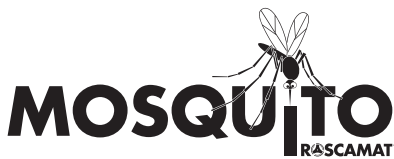
ROSCAMAT®

REVOLUTIONARY TAPPING ARM MACHINES



www.rosamat.com

Electric Mac



(90 kg./mm²)
M16 (aluminium)



Orientable
Head V-H, 4x90°

TAP UP TO
M14 9/16"



Model R·MOSQUITO

Reach 765 mm. - 30"
Height 515 mm. - 20"

- Single Phase 220 V. – Available at 110 V.
- Heavy duty cast aluminium construction
- Base elevator
- High frequency Electric Motor
- Speed control to right direction
- Tap adaptors of size 19/1 for quick change

OPTIONS AVAILABLE

- Vertical tapping
- Vertical & Horizontal tapping –VH- (4x90°)
- Automatic Tool Lubrication Control

| Description | Head orientation | Speed RPM | Capacity (Steel 90 kg./mm ²) | | Max Torque Nm |
|-------------------------------|---------------------|--------------|--|------------|------------------|
| | | | Metric | Inch | |
| Mosquito 1 Speed – 300 | Vertical | 300 | M2-M14 | #0 – 9/16" | 34 |
| Mosquito 1 Speed - 600 | Vertical | 600 | M2-M10 | #0 – 3/8" | 16 |
| Mosquito 1 Speed – 300 VH | Vertical/Horizontal | 300 | M2-M14 | #0 – 9/16" | 34 |
| Mosquito 1 Speed – 600 VH | Vertical/Horizontal | 600 | M2-M10 | #0 – 3/8" | 16 |
| Mosquito 2 Speed – 300/600 | Vertical | 300/600 | M2-M14 | #0 – 9/16" | 34 |
| Mosquito 2 Speed – 300/600 VH | Vertical/Horizontal | 300/600 | M2-M14 | #0 – 9/16" | 34 |

hines

SERIES: MOSQUITO, TIGER & SHARK



Model R-TIGER

Reach 1020 mm. -40"
Height 535 mm. -21"

- TAP UP TO M27 – 1"
- 220 V. Single Phase
- High frequency motor
- Electronic speed indicator
- Speed control to right direction
- 1 Motor 7 speed capabilities
- 7 interchangeable speed modules
- Heavy duty cast aluminium construction

OPTIONS AVAILABLE

- Vertical tapping
- Vertical & Horizontal tapping -VH- (4x90°)
- Tool lubrication with timer
- Tapping depth control



Single Phase
220 VOLT
Available in 110 V

(90 kg./mm2)
M30 (aluminium)

TAP UP TO
M27 1"

| Description | Head Orientation | Speed RPM | Capacity (Steel 90 kg./mm2) | |
|-------------------|-----------------------|-----------|-----------------------------|---------|
| | | | Metric | Inch |
| ROSCAMAT TIGER | Vertical | 90 -1050 | M2-M27 | #0 – 1" |
| ROSCAMAT TIGER VH | Vertical & Horizontal | 90 -1050 | M2-M27 | #0 – 1" |

Modular System - Interchangeable Speed

| Module | Max. speed. (rpm) | Torque max. | | Adapter Size | Tapping Capacity - Steel <90Kg | |
|--------|-------------------|-------------|-------|--------------|---|-------------|
| | | Nm | Ft•lb | | Metric | Inches |
| 90 | 90 | 150 | 66 | ø 31 | M16-M27 | 1/2" – 1" |
| 170 | 170 | 79 | 58 | ø 31 | M16-M20 | 1/2" – 3/4" |
| 300 | 300 | 44 | 32 | ø 19 | M2- M16 | #0 – 9/16" |
| 550 | 550 | 24 | 15 | ø 19 | M2-M12 | #0 – 1/2" |
| 750 | 750 | 17 | 13 | ø 19 | M2-M10 | #0 – 3/4" |
| 1050 | 1050 | 12,5 | 9 | ø 19 | M2-M8 | #0 – 5/16" |
| 2100 | 2100 | 6 | 4 | B-16 cone | Drills up to ø8 aluminium, Cast Iron, etc | |

Modules for Model R-TIGER.

Model R-SHARK



Reach 1020 mm. -48"
Height 535 mm. -32"

- TAP UP TO M36 – 1 3/8"
- TAP UP TO M27 – 1" in horizontal
- 220 V. Single Phase
- High frequency motor
- Electronic speed indicator
- Right & left rotation control
- 1 Motor 6 speed capabilities
- 6 interchangeable speed modules
- Tool lubrication with timer
- Tapping depth control
- Heavy duty cast aluminium construction



Orientable Head V-H
For model R-Tiger & R-Shark



OPTIONS

- Vertical tapping
- Vertical & Horizontal tapping -VH- (4x90°)

TAP UP TO
M27 1"
in Horizontal

TAP UP TO
M36 1-3/8"

Single Phase
220 VOLT
Available in 110 V

| Description | Orientation | Speed RPM | Capacity | |
|-------------------|-----------------------|-----------|----------|-------------|
| | | | Metric | Inch |
| ROSCAMAT SHARK | Vertical | 40 - 900 | M2-M36 | #0 – 1 3/8" |
| ROSCAMAT SHARK VH | Vertical & Horizontal | 40 - 900 | M2-M36 | #0 – 1 3/8" |

Modular System - Interchangeable Speed



| Module | Max. speed. (rpm) | Torque max. | | Adapter Size | Tapping Capacity - Steel <90Kg | |
|--------|-------------------|-------------|-------|--------------|--------------------------------|---------------|
| | | Nm | Ft•lb | | Metric | Inches |
| 40 | 40 | 340 | 251 | ø 48/3 | M27-M36 | 1/2" – 1 3/8" |
| 75 | 75 | 185 | 136 | ø 31/2 | M18-M27 | 5/16" – 7/8" |
| 140 | 140 | 95 | 70 | ø 31/2 | M18- M22 | 5/16" – 3/4" |
| 320 | 320 | 44 | 32 | ø 19/1 | M2-M16 | #0 – 9/16" |
| 500 | 500 | 28 | 21 | ø 19/1 | M2-M12 | #0 – 7/16" |
| 900 | 900 | 15 | 11 | ø 19/1 | M2-M8 | #0 – 5/16" |

Modules for Model R-SHARK

Pneumatic

SERIES:
200, 400, 500 & 500RH



Model R-200

Reach 935 mm. – 37”
Height 660 mm. – 26”

- Tap up to M14 (M16 Al) - 9/16”
- Air motor engineered for tapping
- Heavy duty cast aluminium construction
- Base elevator
- Tap adaptors of Size 1 for quick change

OPTIONS

- Vertical tapping
- Vertical & Horizontal tapping –VH- (4x90°)
- 350 or 750 rpm single speed models



(90 kg./mm²)
M16 (aluminium)

TAP UP TO
M14-9/16”

| Description | Head orientation | Speed RPM | Capacity (Steel 90 kg./mm ²) | |
|-----------------------|---------------------|-----------|--|------------|
| | | | Metric | Inch |
| Roscamat 200 – 350 | Vertical | 350 | M2-M14 | #0 – 9/16” |
| Roscamat 200 – 750 | Vertical | 750 | M2-M10 | #0 – 3/8” |
| Roscamat 200 VH – 350 | Vertical/Horizontal | 350 | M2-M14 | #0 – 9/16” |
| Roscamat 200 VH – 750 | Vertical/Horizontal | 750 | M2-M10 | #0 – 3/8” |

Model R-400

Reach 1100 mm. - 43"

Height 680 mm. - 27"

- TAP UP TO M24- 7/8"
- Speed Range (rpm) 90 - 2100
- Air motor engineered for tapping
- Heavy duty cast aluminum construction
- Utilizes size 19/1 & 31/2 tap adaptors for quick change
- 1 Motor 7 speed capabilities
- 7 interchangeable speed modules
- Drilling Module up to ø8 mm.
- 5/16" (soft materials)

OPTIONS AVAILABLE

- Vertical tapping
- Vertical & Horizontal tapping
-VH- (4x90°)
- Tool lubrication system -E-



(90 kg./mm²)
M27 (aluminium)

TAP UP TO
M24-7/8"

| Description | Head orientation | Capacity (Steel 90 kg./mm ²) | |
|---------------------|-----------------------|--|-----------|
| | | Metric | Inch |
| ROSCAMAT 400 V | Vertical | M2-M24 | #0 - 7/8" |
| ROSCAMAT 400 V -E- | Vertical | M2-M24 | #0 - 7/8" |
| ROSCAMAT 400 VH | Vertical & Horizontal | M2-M24 | #0 - 7/8" |
| ROSCAMAT 400 VH -E- | Vertical & Horizontal | M2-M24 | #0 - 7/8" |

Modular System - Interchangeable Speed



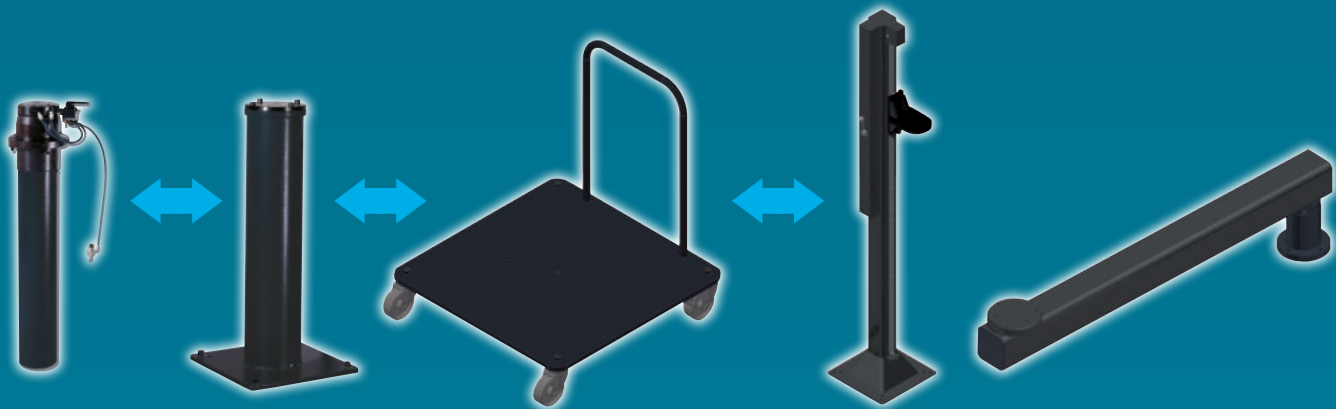
| Module | Max. speed. (rpm) | Torque max. | | Adapter Size | Tapping Capacity - Steel <90Kg | |
|--------|----------------------|-------------|-------|-----------------|---|------------|
| | | Nm | Ft•lb | | Metric | Inches |
| 90 | 90 | 150 | 66 | ø 31/2 | M18-M27 | 5/16"-3/8" |
| 170 | 170 | 79 | 58 | ø 31/2 | M18-M22 | 5/16"-5/8" |
| 300 | 300 | 44 | 32 | ø 19/1 | M2-M16 | #0-9/16" |
| 550 | 550 | 24 | 18 | ø 19/1 | M2-M12 | #0-1/2" |
| 750 | 750 | 17 | 13 | ø 19/1 | M2-M8 | #0-3/8" |
| 1.050 | 1.050 | 12,5 | 9 | ø 19/1 | M2-M6 | #0-5/16" |
| 2.100 | 2.100 | 6 | 4 | B16 | Drill up to ø 8 - 5/16" Aluminum, Cast Iron | |

**Modules for Pneumatic models
ROSCAMAT R400, R500 and R500 RH (Pneumatic)**

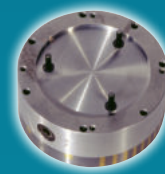
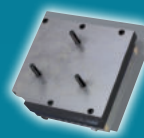
Accessories



| Description | Dimensions | | Series | | | | | |
|--------------|---------------------|----------------------------------|--------|-----|-----|----------|-------|-------|
| | mm | Inch | 200 | 400 | 500 | Mosquito | Tiger | Shark |
| Knee table | 500 x 500 x 900 mm | 19 11/16" x 19 11/16" x 35 7/16" | • | • | | • | | |
| Small table | 700 x 700 x 850 mm | 27 9/16" x 27 9/16" x 33 7/16" | • | | | • | | |
| Medium table | 850 x 850 x 850 mm | 33 7/16" x 33 7/16" x 33 7/16" | | • | • | • | • | • |
| Large table | 1100 x 850 x 850 mm | 43 5/16" x 33 7/16" x 33 7/16" | | • | • | • | • | • |



| Description | Dimensions | | Series | | | | | |
|---------------------------|------------|----------------------------------|--------|-----|-----|----------|-------|-------|
| | mm | inch | 200 | 400 | 500 | Mosquito | Tiger | Shark |
| Pneumatic Lifter 550 mm | 550 | 21 5/8" | • | • | • | • | • | • |
| Column | 740 | 13 3/4" x 13 3/4" x 29 1/2" | • | • | • | • | • | • |
| Trolley | 40 | 27 9/16" x 27 9/16" x 9/16" | • | • | • | • | • | • |
| Lifter 2000 mm.-Pneumatic | 2000 | 13 25/32" x 13 25/32" x 76 5/32" | • | • | • | • | • | • |
| Radial Extension | 1000 | 39 3/8" x 10 7/8" | • | • | • | • | • | • |



| Description | Dimensions | | Series | | | | | |
|------------------|------------|-------|--------|-----|-----|----------|-------|-------|
| | mm. | Inch. | 200 | 400 | 500 | Mosquito | Tiger | Shark |
| Small Clamp | N/A | N/A | • | • | | • | • | |
| Large Clamp | N/A | N/A | • | • | • | • | • | • |
| Magnetic support | 150x150 | | • | | | | | |
| Magnetic support | Ø200 | | | • | | • | | |
| Magnetic support | Ø250 | | | • | • | | • | |

Toolholders applications



Torque Control Tapholders

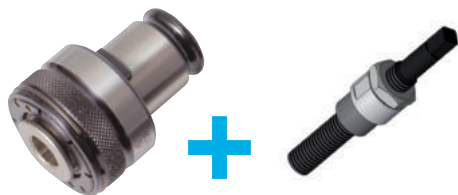
With Clutch limited torque Setting avoiding breaking the TAP



Rigid Tapholders

Rigid tapholders are best suited for getting tools like chamfers, drills, reamers or screwing devices.

| Metric | Coupl. ø | Tap Fitting DIN ø x | Norm |
|--------|-------------|------------------------|---------|
| M3 | 19/1 | 3,5 x 2,7 | DIN 371 |
| M4 | 19/1 | 4,5 x 3,4 | DIN 371 |
| M5 | 19/1 | 6 x 4,9 | DIN 371 |
| M6 | 19/1 | 6 x 4,9 | DIN 376 |
| M7 | 19/1 | 7 x 5,5 | DIN 376 |
| M8 | 19/1 | 8 x 6,2 | DIN 376 |
| M10 | 19/1 | 10 x 8 | DIN 376 |
| M12 | 19/1 | 9 x 7 | DIN 376 |
| M14 | 19/1 & 31/2 | 11 x 9 | DIN376 |
| M16 | 19/1 & 31/2 | 12 x 9 | DIN 376 |
| M18 | 31/2 | 18 x 14,5 | DIN 376 |
| M20 | 31/2 | 16 x 12 | DIN 376 |
| M22 | 31/2 | 18 x 14,5 | DIN 376 |
| M24 | 31/2 & 48/3 | 18 x 14,5 | DIN 376 |
| M27 | 31/2 & 48/3 | 20 x 16 | DIN 376 |
| M30 | 31/2 & 48/3 | 22 x 18 | DIN 376 |
| M33 | 48/3 | 25 x 20 | DIN 376 |
| M36 | 48/3 | 28 x 22 | DIN 376 |
| M39 | 48/3 | 32 x 24 | DIN 376 |
| M42 | 48/3 | 32 x 24 | DIN 376 |



Helicoil fittings

use those special stems according to size for helicoil inserts. Available in Metric, UNC & UNF



Coupling Size 19/1 Length = 80 mm.

Tool extension to reach difficult deep points



Drill Chuck

Single solution for drilling soft materials without big drilling effort



Reduction Cup

Used to adapt different tapholders coupling dimensions.

3 types:
Reducer 48/31 • Reductor 31/19 • Reductor 48/19



Die thread holder

Different sizes according the diameter of the die or Metric size

Coupl. ø Tapping depth

| | | |
|---------|--------|---------|
| M5-M6 | ø19/1 | 100 mm. |
| M8 | ø 19/1 | 100 mm. |
| M10 | ø 19/1 | 120 mm. |
| M12-M14 | ø 19/1 | 150 mm. |
| M16-M20 | ø 31/2 | 150 mm |

Model R-500/ R-500 VH / R-500 RH

Reach 2180 mm. - 83"
Height 1110 mm. - 44"

- TAP UP TO M24- 7/8"
- Speed Range (rpm) 90 - 2100
- Air motor engineered for tapping
- Heavy duty cast aluminum construction
- Utilizes size 19/1 & 31/2 tap adaptors for quick change
- 1 Motor 7 speed capabilities
- 7 interchangeable speed modules
- Drilling Module up to $\varnothing 8$ mm. - 5/16" (soft materials)

OPTIONS AVAILABLE

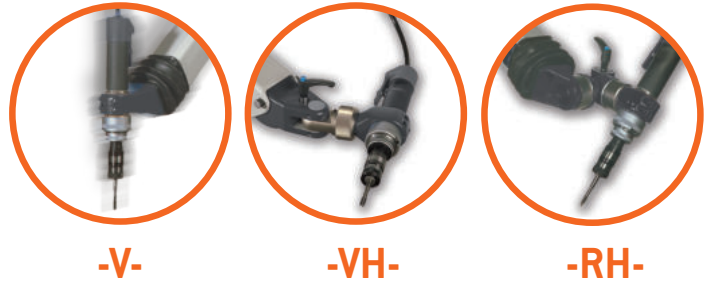
- Vertical tapping
- Vertical & Horizontal tapping -VH- (4x90°)
- Multiposition, tap in any angle (RH series)
- Tool lubrication system -E-

(90 kg./mm²)
M27 (aluminium)

TAP UP TO
M24-7/8"



The **RH series**
can Tap at any angle!



TAP UP TO
M24-7/8"

(90 kg./mm²)
M27 (aluminium)

| Description | Head Orientation | Tapping Capacity [Steel 90 kg./mm ²] | |
|---------------------|-----------------------|---|-----------|
| | | Metric | Inch |
| ROSCAMAT 500 V | Vertical | M2-M24 | #0 - 7/8" |
| ROSCAMAT 500 V -E- | Vertical | M2-M24 | #0 - 7/8" |
| ROSCAMAT 500 VH | Vertical & Horizontal | M2-M24 | #0 - 7/8" |
| ROSCAMAT 500 VH -E- | Vertical & Horizontal | M2-M24 | #0 - 7/8" |
| ROSCAMAT 500 RH | Multiposition | M2-M24 | #0 - 7/8" |
| ROSCAMAT 500 RH E | Multiposition | M2-M24 | #0 - 7/8" |

SINCE 1987, SIGNS OF OUR DUTY:

We Design / We Manufacture / We Service



PASSION FOR QUALITY PRODUCTS

TECNOSPIRO MACHINE TOOL, S.L.

P.I.Pla dels Vinyats I, C/B, nau 2

ES08250 – Sant Joan de Vilatorrada

Barcelona – Spain

Telf. +34 938764359 · Fax: +34938767738

E-mail: roscamat@roscamat.com

www.roscamat.com

