



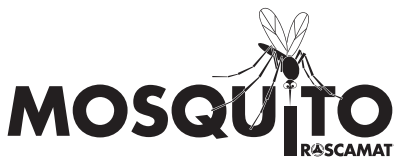
ROSCAMAT®

REVOLUTIONARY TAPPING ARM MACHINES



www.rosamat.com

Electric Mac



(90 kg./mm²)
M16 (aluminium)



Orientable
Head V-H, 4x90°

TAP UP TO
M14 9/16"



Model R·MOSQUITO

Reach 765 mm. - 30"

Height 515 mm. -20"

- Single Phase 220 V. – Available at 110 V.
- Heavy duty cast aluminium construction
- Base elevator
- High frequency Electric Motor
- Speed control to right direction
- Tap adaptors of size 19/1 for quick change

OPTIONS AVAILABLE

- Vertical tapping
- Vertical & Horizontal tapping –VH- (4x90°)
- Automatic Tool Lubrication Control

Description	Head orientation	Speed RPM	Capacity (Steel 90 kg./mm ²)		Max Torque Nm
			Metric	Inch	
Mosquito 1 Speed – 300	Vertical	300	M2-M14	#0 – 9/16"	34
Mosquito 1 Speed - 600	Vertical	600	M2-M10	#0 – 3/8"	16
Mosquito 1 Speed – 300 VH	Vertical/Horizontal	300	M2-M14	#0 – 9/16"	34
Mosquito 1 Speed – 600 VH	Vertical/Horizontal	600	M2-M10	#0 – 3/8"	16
Mosquito 2 Speed – 300/600	Vertical	300/600	M2-M14	#0 – 9/16"	34
Mosquito 2 Speed – 300/600 VH	Vertical/Horizontal	300/600	M2-M14	#0 – 9/16"	34

hines

SERIES: MOSQUITO, TIGER & SHARK



Model R-TIGER

Reach 1020 mm. -40"
Height 535 mm. -21"

- TAP UP TO M27 – 1"
- 220 V. Single Phase
- High frequency motor
- Electronic speed indicator
- Speed control to right direction
- 1 Motor 7 speed capabilities
- 7 interchangeable speed modules
- Heavy duty cast aluminium construction

OPTIONS AVAILABLE

- Vertical tapping
- Vertical & Horizontal tapping -VH- (4x90°)
- Tool lubrication with timer
- Tapping depth control



Single Phase
220 VOLT
Available in 110 V

(90 kg./mm2)
M30 (aluminium)

TAP UP TO
M27 1"

Description	Head Orientation	Speed RPM	Capacity (Steel 90 kg./mm2)	
			Metric	Inch
ROSCAMAT TIGER	Vertical	90 -1050	M2-M27	#0 – 1"
ROSCAMAT TIGER VH	Vertical & Horizontal	90 -1050	M2-M27	#0 – 1"

Modular System - Interchangeable Speed

Module	Max. speed. (rpm)	Torque max.		Adapter Size	Tapping Capacity - Steel <90Kg	
		Nm	Ft•lb		Metric	Inches
90	90	150	66	ø 31	M16-M27	1/2" – 1"
170	170	79	58	ø 31	M16-M20	1/2" – 3/4"
300	300	44	32	ø 19	M2- M16	#0 – 9/16"
550	550	24	15	ø 19	M2-M12	#0 – 1/2"
750	750	17	13	ø 19	M2-M10	#0 – 3/4"
1050	1050	12,5	9	ø 19	M2-M8	#0 – 5/16"
2100	2100	6	4	B-16 cone	Drills up to ø8 aluminium, Cast Iron, etc	

Modules for Model R-TIGER.

Model R-SHARK



Reach 1020 mm. -48"
Height 535 mm. -32"

- TAP UP TO M36 – 1 3/8"
- TAP UP TO M27 – 1" in horizontal
- 220 V. Single Phase
- High frequency motor
- Electronic speed indicator
- Right & left rotation control
- 1 Motor 6 speed capabilities
- 6 interchangeable speed modules
- Tool lubrication with timer
- Tapping depth control
- Heavy duty cast aluminium construction



Orientable Head V-H
For model R-Tiger & R-Shark



OPTIONS

- Vertical tapping
- Vertical & Horizontal tapping -VH- (4x90°)

TAP UP TO
M27 1"
in Horizontal

TAP UP TO
M36 1-3/8"

Single Phase
220 VOLT
Available in 110 V

Description	Orientation	Speed RPM	Capacity	
			Metric	Inch
ROSCAMAT SHARK	Vertical	40 - 900	M2-M36	#0 – 1 3/8"
ROSCAMAT SHARK VH	Vertical & Horizontal	40 - 900	M2-M36	#0 – 1 3/8"

Modular System - Interchangeable Speed



Module	Max. speed. (rpm)	Torque max.		Adapter Size	Tapping Capacity - Steel <90Kg	
		Nm	Ft•lb		Metric	Inches
40	40	340	251	ø 48/3	M27-M36	1/2" – 1 3/8"
75	75	185	136	ø 31/2	M18-M27	5/16" – 7/8"
140	140	95	70	ø 31/2	M18- M22	5/16" – 3/4"
320	320	44	32	ø 19/1	M2-M16	#0 – 9/16"
500	500	28	21	ø 19/1	M2-M12	#0 – 7/16"
900	900	15	11	ø 19/1	M2-M8	#0 – 5/16"

Modules for Model R-SHARK

Pneumatic

SERIES:
200, 400, 500 & 500RH



Model R-200

Reach 935 mm. – 37"
Height 660 mm. – 26"

- Tap up to M14 (M16 Al) - 9/16"
- Air motor engineered for tapping
- Heavy duty cast aluminium construction
- Base elevator
- Tap adaptors of Size 1 for quick change

OPTIONS

- Vertical tapping
- Vertical & Horizontal tapping –VH- (4x90°)
- 350 or 750 rpm single speed models



(90 kg./mm²)
M16 (aluminium)

TAP UP TO
M14-9/16"

Description	Head orientation	Speed RPM	Capacity (Steel 90 kg./mm ²)	
			Metric	Inch
Roscamat 200 – 350	Vertical	350	M2-M14	#0 – 9/16"
Roscamat 200 – 750	Vertical	750	M2-M10	#0 – 3/8"
Roscamat 200 VH – 350	Vertical/Horizontal	350	M2-M14	#0 – 9/16"
Roscamat 200 VH – 750	Vertical/Horizontal	750	M2-M10	#0 – 3/8"

Model R-400

Reach 1100 mm. - 43"

Height 680 mm. - 27"

- TAP UP TO M24- 7/8"
- Speed Range (rpm) 90 - 2100
- Air motor engineered for tapping
- Heavy duty cast aluminum construction
- Utilizes size 19/1 & 31/2 tap adaptors for quick change
- 1 Motor 7 speed capabilities
- 7 interchangeable speed modules
- Drilling Module up to ø8 mm.
- 5/16" (soft materials)

OPTIONS AVAILABLE

- Vertical tapping
- Vertical & Horizontal tapping
-VH- (4x90°)
- Tool lubrication system -E-



(90 kg./mm²)
M27 (aluminium)
**TAP UP TO
M24-7/8"**

Description	Head orientation	Capacity (Steel 90 kg./mm ²)	
		Metric	Inch
ROSCAMAT 400 V	Vertical	M2-M24	#0 - 7/8"
ROSCAMAT 400 V -E-	Vertical	M2-M24	#0 - 7/8"
ROSCAMAT 400 VH	Vertical & Horizontal	M2-M24	#0 - 7/8"
ROSCAMAT 400 VH -E-	Vertical & Horizontal	M2-M24	#0 - 7/8"

Modular System - Interchangeable Speed



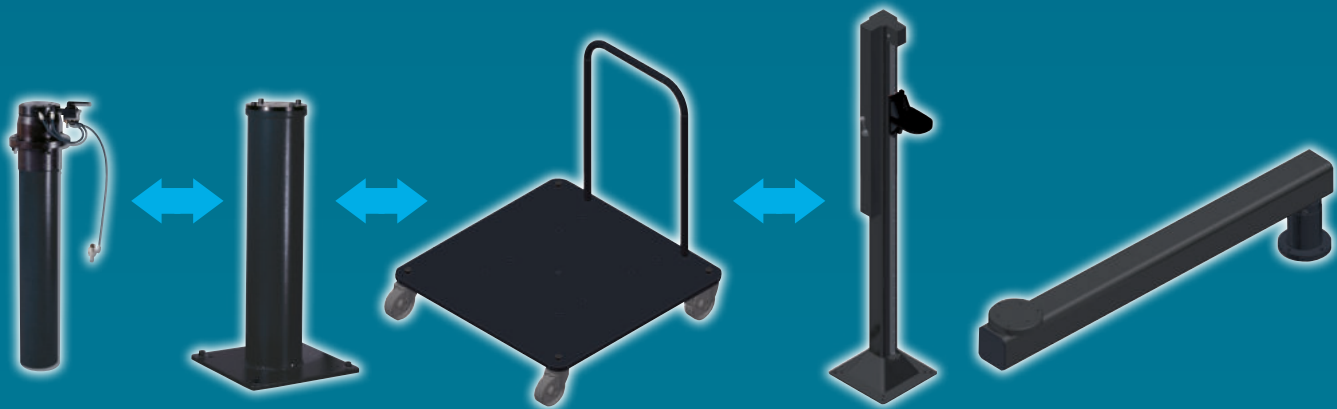
Module	Max. speed. (rpm)	Torque max.		Adapter Size	Tapping Capacity - Steel <90Kg	
		Nm	Ft•lb		Metric	Inches
90	90	150	66	ø 31/2	M18-M27	5/16"-3/8"
170	170	79	58	ø 31/2	M18-M22	5/16"-5/8"
300	300	44	32	ø 19/1	M2-M16	#0-9/16"
550	550	24	18	ø 19/1	M2-M12	#0-1/2"
750	750	17	13	ø 19/1	M2-M8	#0-3/8"
1.050	1.050	12,5	9	ø 19/1	M2-M6	#0-5/16"
2.100	2.100	6	4	B16	Drill up to ø 8 - 5/16" Aluminum, Cast Iron	

**Modules for Pneumatic models
ROSCAMAT R400, R500 and R500 RH (Pneumatic)**

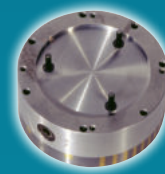
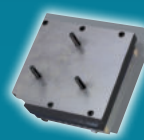
Accessories



Description	Dimensions		Series					
	mm	Inch	200	400	500	Mosquito	Tiger	Shark
Knee table	500 x 500 x 900 mm	19 11/16" x 19 11/16" x 35 7/16"	•	•		•		
Small table	700 x 700 x 850 mm	27 9/16" x 27 9/16" x 33 7/16"	•			•		
Medium table	850 x 850 x 850 mm	33 7/16" x 33 7/16" x 33 7/16"		•	•	•	•	•
Large table	1100 x 850 x 850 mm	43 5/16" x 33 7/16" x 33 7/16"		•	•	•	•	•



Description	Dimensions		Series					
	mm	inch	200	400	500	Mosquito	Tiger	Shark
Pneumatic Lifter 550 mm	550	21 5/8"	•	•	•	•	•	•
Column	740	13 3/4" x 13 3/4" x 29 1/2"	•	•	•	•	•	•
Trolley	40	27 9/16" x 27 9/16" x 9/16"	•	•	•	•	•	•
Lifter 2000 mm.-Pneumatic	2000	13 25/32" x 13 25/32" x 76 5/32"	•	•	•	•	•	•
Radial Extension	1000	39 3/8" x 10 7/8"	•	•	•	•	•	•



Description	Dimensions		Series					
	mm.	Inch.	200	400	500	Mosquito	Tiger	Shark
Small Clamp	N/A	N/A	•	•		•	•	
Large Clamp	N/A	N/A	•	•	•	•	•	•
Magnetic support	150x150		•					
Magnetic support	Ø200			•		•		
Magnetic support	Ø250			•	•		•	

Toolholders applications



Torque Control Tapholders

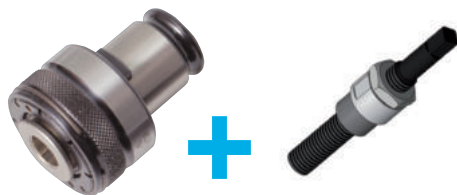
With Clutch limited torque Setting avoiding breaking the TAP



Rigid Tapholders

Rigid tapholders are best suited for getting tools like chamfers, drills, reamers or screwing devices.

Metric	Coupl. ø	Tap Fitting DIN ø x	Norm
M3	19/1	3,5 x 2,7	DIN 371
M4	19/1	4,5 x 3,4	DIN 371
M5	19/1	6 x 4,9	DIN 371
M6	19/1	6 x 4,9	DIN 376
M7	19/1	7 x 5,5	DIN 376
M8	19/1	8 x 6,2	DIN 376
M10	19/1	10 x 8	DIN 376
M12	19/1	9 x 7	DIN 376
M14	19/1 & 31/2	11 x 9	DIN376
M16	19/1 & 31/2	12 x 9	DIN 376
M18	31/2	18 x 14,5	DIN 376
M20	31/2	16 x 12	DIN 376
M22	31/2	18 x 14,5	DIN 376
M24	31/2 & 48/3	18 x 14,5	DIN 376
M27	31/2 & 48/3	20 x 16	DIN 376
M30	31/2 & 48/3	22 x 18	DIN 376
M33	48/3	25 x 20	DIN 376
M36	48/3	28 x 22	DIN 376
M39	48/3	32 x 24	DIN 376
M42	48/3	32 x 24	DIN 376



Helicoil fittings

use those special stems according to size for helicoil inserts. Available in Metric, UNC & UNF



Coupling Size 19/1 Length = 80 mm.

Tool extension to reach difficult deep points



Drill Chuck

Single solution for drilling soft materials without big drilling effort



Reduction Cup

Used to adapt different tapholders coupling dimensions.

3 types:
Reducer 48/31 • Reductor 31/19 • Reductor 48/19



Die thread holder

Different sizes according the diameter of the die or Metric size

Coupl. ø Tapping depth

M5-M6	ø19/1	100 mm.
M8	ø 19/1	100 mm.
M10	ø 19/1	120 mm.
M12-M14	ø 19/1	150 mm.
M16-M20	ø 31/2	150 mm

Model R-500/ R-500 VH / R-500 RH

Reach 2180 mm. - 83"
Height 1110 mm. - 44"

- TAP UP TO M24- 7/8"
- Speed Range (rpm) 90 - 2100
- Air motor engineered for tapping
- Heavy duty cast aluminum construction
- Utilizes size 19/1 & 31/2 tap adaptors for quick change
- 1 Motor 7 speed capabilities
- 7 interchangeable speed modules
- Drilling Module up to $\varnothing 8$ mm. - 5/16" (soft materials)

OPTIONS AVAILABLE

- Vertical tapping
- Vertical & Horizontal tapping -VH- (4x90°)
- Multiposition, tap in any angle (RH series)
- Tool lubrication system -E-

(90 kg./mm²)
M27 (aluminium)

TAP UP TO
M24-7/8"



The **RH series**
can Tap at any angle!



TAP UP TO
M24-7/8"

(90 kg./mm²)
M27 (aluminium)

Description	Head Orientation	Tapping Capacity [Steel 90 kg./mm ²]	
		Metric	Inch
ROSCAMAT 500 V	Vertical	M2-M24	#0 - 7/8"
ROSCAMAT 500 V -E-	Vertical	M2-M24	#0 - 7/8"
ROSCAMAT 500 VH	Vertical & Horizontal	M2-M24	#0 - 7/8"
ROSCAMAT 500 VH -E-	Vertical & Horizontal	M2-M24	#0 - 7/8"
ROSCAMAT 500 RH	Multiposition	M2-M24	#0 - 7/8"
ROSCAMAT 500 RH E	Multiposition	M2-M24	#0 - 7/8"

SINCE 1987, SIGNS OF OUR DUTY:

We Design / We Manufacture / We Service



PASSION FOR QUALITY PRODUCTS

TECNOSPIRO MACHINE TOOL, S.L.

P.I.Pla dels Vinyats I, C/B, nau 2

ES08250 – Sant Joan de Vilatorrada

Barcelona – Spain

Telf. +34 938764359 · Fax: +34938767738

E-mail: roscamat@roscamat.com

www.roscamat.com

